

**WBP11 antibody - N-terminal region**  
**Rabbit Polyclonal Antibody**  
**Catalog # AI12665****Specification**

---

**WBP11 antibody - N-terminal region - Product Information**

Application	WB, IHC, IP
Primary Accession	<a href="#">O9Y2W2</a>
Other Accession	<a href="#">NM_016312</a> , <a href="#">NP_057396</a>
Reactivity	Human, Mouse, Rat, Rabbit, Zebrafish, Pig, Horse, Bovine, Guinea Pig, Dog
Predicted	Human, Mouse, Rat, Rabbit, Zebrafish, Horse, Guinea Pig, Dog
Host	Rabbit
Clonality	Polyclonal
Calculated MW	70kDa KDa

**WBP11 antibody - N-terminal region - Additional Information****Gene ID** 51729**Alias Symbol** DKFZp779M1063, NPWBP, SIPP1, WBP-11**Other Names**

WW domain-binding protein 11, WBP-11, Npw38-binding protein, NpwBP, SH3 domain-binding protein SNP70, Splicing factor that interacts with PQBP-1 and PP1, WBP11, NPWBP, SIPP1, SNP70

**Format**

Liquid. Purified antibody supplied in 1x PBS buffer with 0.09% (w/v) sodium azide and 2% sucrose.

**Reconstitution & Storage**

Add 50 ul of distilled water. Final anti-WBP11 antibody concentration is 1 mg/ml in PBS buffer with 2% sucrose. For longer periods of storage, store at 20°C. Avoid repeat freeze-thaw cycles.

**Precautions**

WBP11 antibody - N-terminal region is for research use only and not for use in diagnostic or therapeutic procedures.

**WBP11 antibody - N-terminal region - Protein Information****Name** WBP11 ([HGNC:16461](#))**Synonyms** NPWBP, SIPP1, SNP70**Function**

Activates pre-mRNA splicing. May inhibit PP1 phosphatase activity.

**Cellular Location**

Nucleus. Cytoplasm. Note=Predominantly located in the nucleus with granular heterogeneous

distribution. Excluded from nucleoli in interphase cells, distributed throughout cytoplasm in dividing cells. Colocalized with SC35 and U2B in the nucleus. In the cytoplasm, associates with the intermediate filament protein vimentin

#### **Tissue Location**

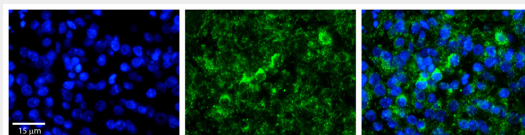
Ubiquitous. Highly expressed in the heart, pancreas, kidney skeletal muscle, placenta and brain (at protein level). Weakly expressed in liver and lung

#### **WBP11 antibody - N-terminal region - Protocols**

Provided below are standard protocols that you may find useful for product applications.

- [Western Blot](#)
- [Blocking Peptides](#)
- [Dot Blot](#)
- [Immunohistochemistry](#)
- [Immunofluorescence](#)
- [Immunoprecipitation](#)
- [Flow Cytometry](#)
- [Cell Culture](#)

#### **WBP11 antibody - N-terminal region - Images**



##### **Rabbit Anti-WBP11 Antibody**

Formalin Fixed Paraffin Embedded Tissue: Human Pineal Tissue Observed Staining: Cytoplasmic in cell bodies of pinealocytes and their processes

Primary Antibody

Concentration: 1:100 Other Working Concentrations: 1/600

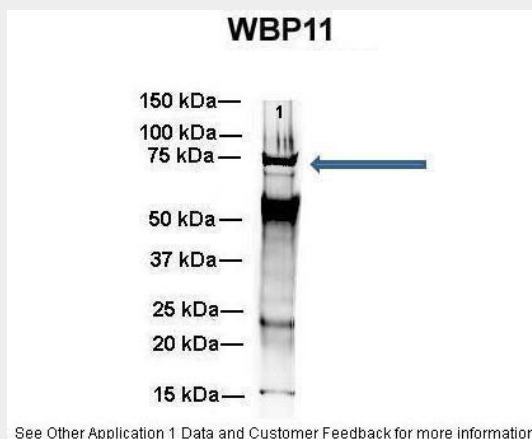
Secondary Antibody: Donkey anti-Rabbit-Cy3

Secondary Antibody

Concentration: 1:200

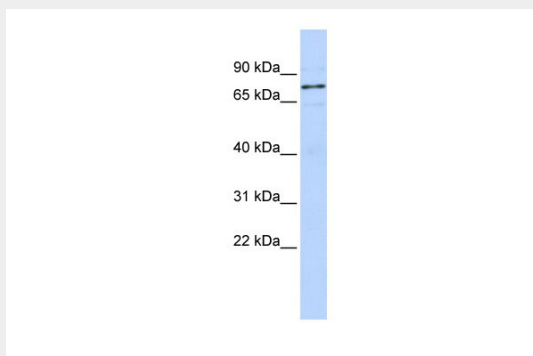
Magnification: 20X

Exposure Time: 0.5 - 2.0 sec



Amount and Sample Type : 500 ug mouse brain homogenate Amount of IP Antibody : 6 ug

Primary Antibody : WBP11  
Primary Antibody Dilution : 1:500  
Secondary Antibody : Goat anti-rabbit Alexa-Fluor 594 Secondary Antibody Dilution : 1:5000  
Gene Name : WBP11 Submitted by : Dr. Yuzhi Chen, University of Arkansas for Medical Science

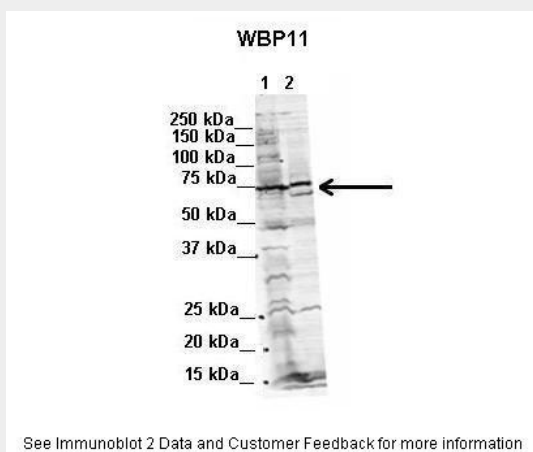


WB Suggested Anti-WBP11 Antibody Titration: 0.2-1  $\mu$ g/ml

ELISA Titer: 1:12500

Positive Control: Hela cell lysate

WBP11 is strongly supported by BioGPS gene expression data to be expressed in Human HeLa cells



Lanes: 1. Human NT-2 cells (60ug) lysate 2. Mouse WT brain extract (80ug)

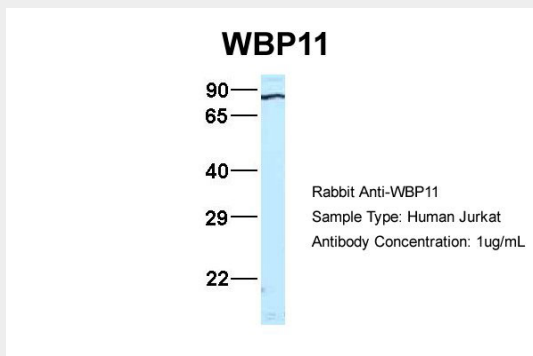
Primary Antibody Dilution: 2 $\mu$ g/ml

Secondary Antibody: IRDye 800CW goat anti-rabbit from Li-COR Bioscience

Secondary Antibody Dilution: 1: 20,000

Gene Name: WBP11

Submitted by: Dr. Yuzhi Chen, University of Arkansas for Medical Science



Host: Rabbit

Target Name: WBP11

Sample Tissue: Jurkat

Antibody Dilution: 1.0µg/ml WBP11 is strongly supported by BioGPS gene expression data to be expressed in Jurkat

#### **WBP11 antibody - N-terminal region - References**

Olsen, J.V., (2006) Cell 127(3), 635-648 Reconstitution and Storage: For short term use, store at 2-8°C up to 1 week. For long term storage, store at -20°C in small aliquots to prevent freeze-thaw cycles.